



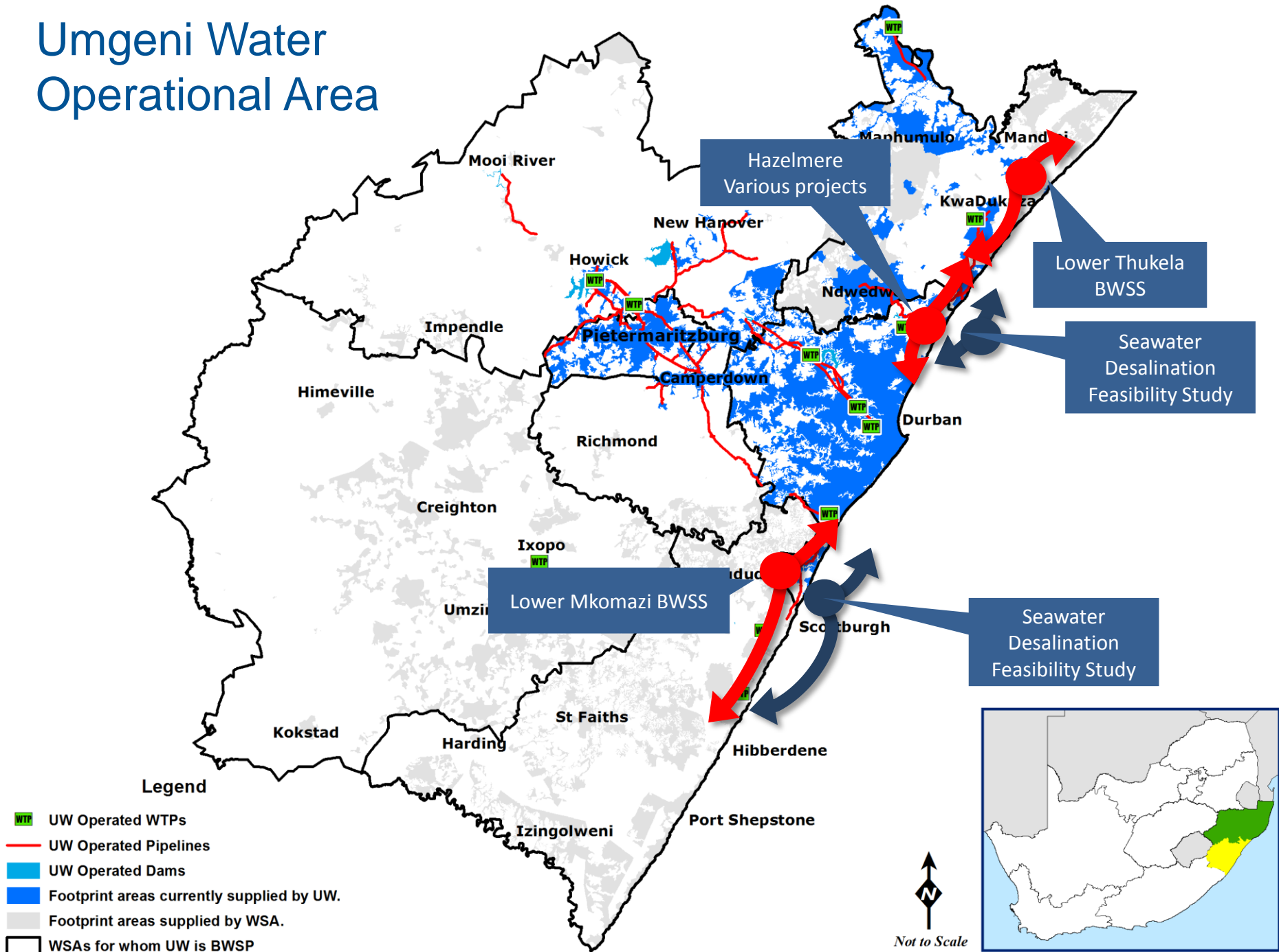
## DWS Reconciliation Strategy Study Umgeni Water Project Progress

Gavin Subramanian  
Planning Engineer  
September 2015

*Celebrating 40 years of safe  
potable water*



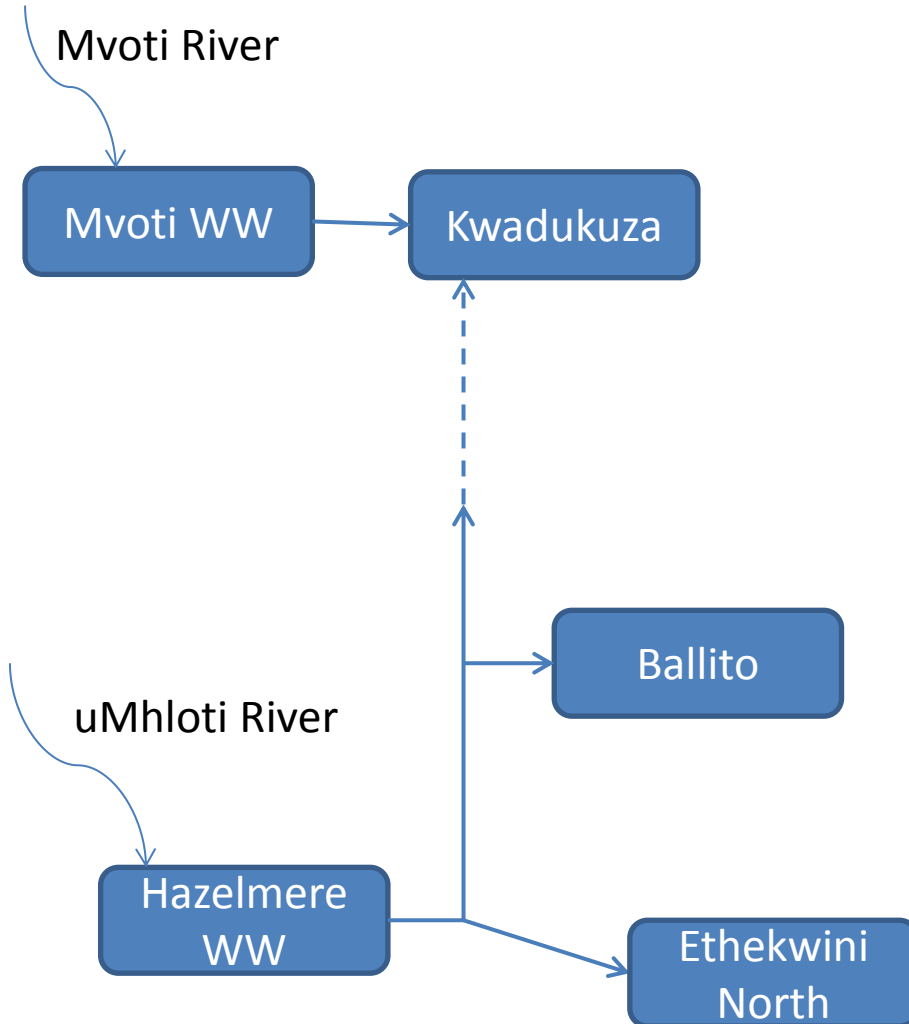
# Umgeni Water Operational Area

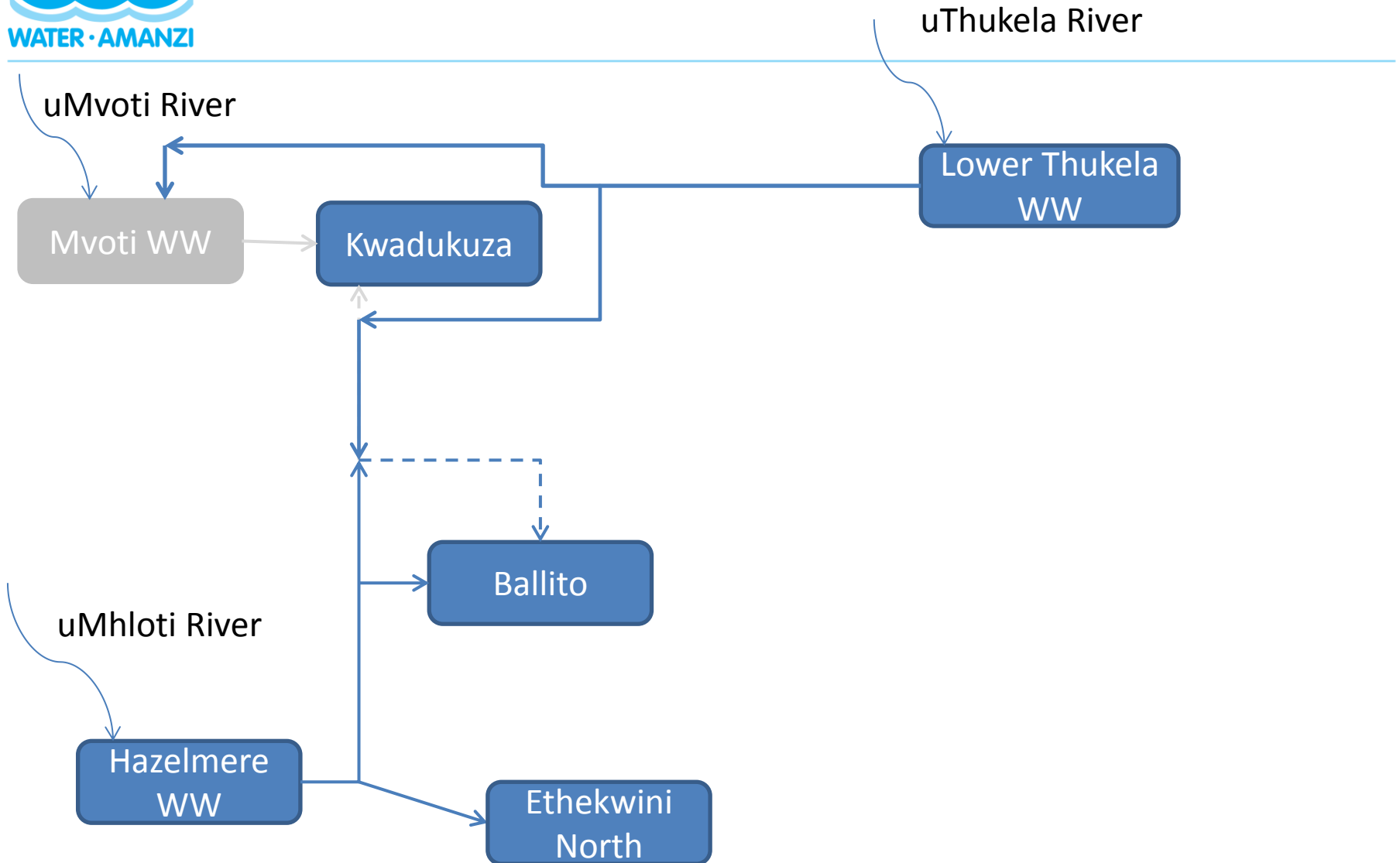


## Progress to date

## Completion

- Contract A1 - Water Treatment Works: 72 % complete ✓ Feb 2016
- Contract A2 - Access Roads, Weir and Abstraction Works: 60 % complete ✓ Jul 2016
- Contract B - Mechanical & Electrical: 81 % complete ✓ May 2016
- Contract C - Gravity Main: 94 % complete ✓ Sep 2015
- Contract D - Rising Main and Reservoir: 41 % complete ✓ Feb 2016
- Contract E - Bulk Power Supply: 76 % complete ✓ Oct 2015
- Practical completion Mid 2016
- Overall completion December 2016









# Lower Tugela Bulk Water Supply System





# Lower Tugela Bulk Water Supply System



## Progress to date

- WW Upgrade and Hazelmere Pumpstation Upgrade (from 55 MI/day to 75 MI/day) - Commissioned



# Hazelmere Supply System



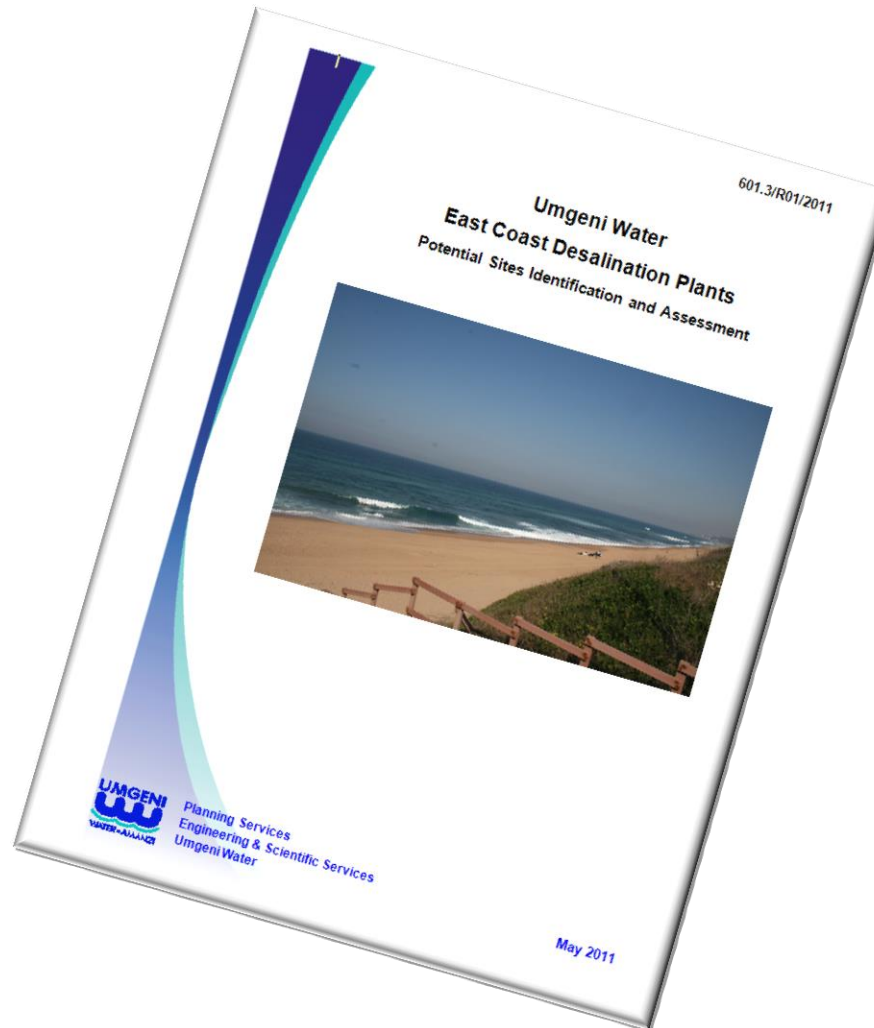
# Lower uMkhomazi Bulk Water Supply Scheme

Project Components:	Abstraction works Pumpstations and associated works Review designed Ngwadini off-channel storage dam holding 10 million m <sup>3</sup> of raw water 100MI/d WTW Bulk Potable water supply infrastructure (approximately 45km of pipeline) A solution to deliver water at the lowest possible overall cost, and with the least environmental impact to the South Coast area
Capacity:	100 Mℓ/day.

## Progress to date

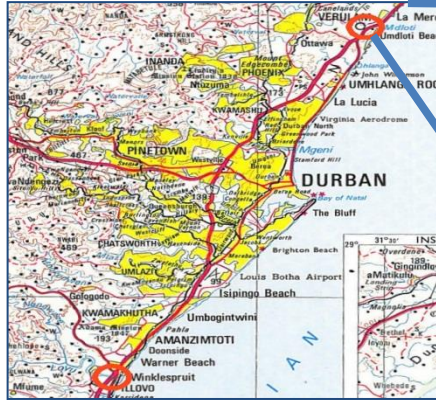
- Detailed Feasibility Study Underway (Completion February 2016)
- EIA Underway (November 2016)
- Estimated Construction Completion Date (March 2022)
- Estimated Cost of Project : R2.2 billion

# East Coast Desalination Plants





# East Coast Desalination Plants



**Tongaat**



**Lovu**



**Mdloti**



## Progress to date

- EIA Underway (February 2016)
- Pilot Plant Tender Awarded, 6 Month Construction Period
- Detailed Feasibility Study Completed. Final Report March 2015
- Estimated Cost of Project : Approx. R3.4 billion for 150MI/d
- Total cost of water R10 to R15 per kl
- Quickest Implementation 2019



Thank you.

*Celebrating 40 years of safe  
potable water*

